

Software Components for the EDIT Platform for Cybertaxonomy

Kohlbecker, A. ¹; Müller, A. ¹; BERENDSOHN, W. G. ¹; Ciardelli, P. ¹; Fradin, H. ⁵; Güntsch, A. ¹; Hoffmann, N. ¹; Kelbert, P. ¹; Mergen, P. ⁴; Roca, P. ³; Welby, J. ²

¹ Freie Universität Berlin, Botanic Garden and Botanical Museum Berlin-Dahlem (BGBM), ² Natural History Museum London (NHM), ³ Museo Nacional de Ciencias Naturales (CSIC), ⁴ Royal Museum for Central Africa (RMCA), ⁵ Museum National d'Histoire Naturelle (MNHN)

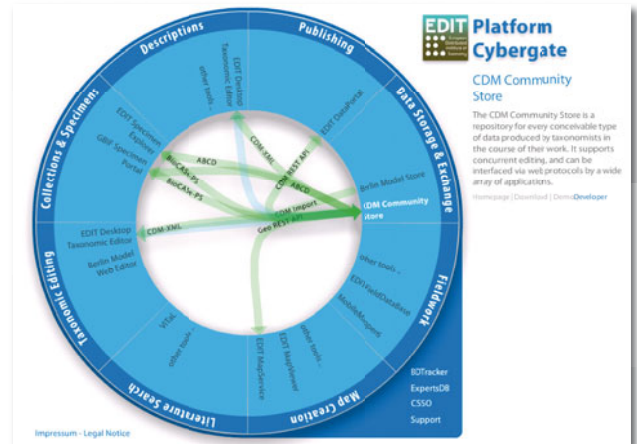
The taxonomic workflow brought to the Internet

The EDIT (European Distributed Institute of Taxonomy) Platform for Cybertaxonomy provides taxonomists with a toolbox of services and applications encompassing and supporting all important taxonomic domains: taxonomic editing, structural descriptions, fieldwork, map creation, literature search and access, as well as publishing, data storage and exchange.

The Platform makes extensive use of integrated interfaces and transformation tools to ensure interoperability with existing software.

The platform also comes with a **federated security and single sign-on system**, with which a user only needs to identify once and then is provided with access to all platform components.

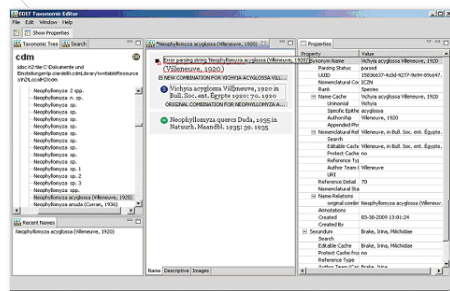
The **Common Data Model (CDM)** is the domain model for core components of the EDIT Platform for Cybertaxonomy. The CDM is primarily based on the TDWG Ontology and the information models from which it was derived, especially the Berlin Taxonomic Information Model and the BioCISE Model for Specimen and Observation Data. Other models and standards, such as taxonomic data standards, bibliographical data standards, and specimen or observation standards, also influenced the modeling.



The **EDIT Platform Cybergate** gives an overview and allows exploring the platform, and the connections and interactions between its various components.

EDIT Desktop Taxonomic Editor

The EDIT Desktop Taxonomic Editor presents a modern solution to the challenges of capturing the taxonomic workflow in software, by using techniques such as drag-and-drop, free-text editing, and passive warning rather than disruptive prompting.



ViTaL

ViTaL (the Virtual Taxonomic Library) is a set of tools designed to help taxonomists locate and use taxonomic literature more easily.

It includes a metasearch tool which will allow a single search to query the catalogues of EDIT partner libraries which include some of the most extensive collections of biological literature in the world. Search results will, where possible, link through to full text versions in repositories such as the Biodiversity Heritage Library (BHL).

EDIT Data Portal

The EDIT Data Portal publishes data hosted in a **CDM Community Store** online.

Each taxon is represented by an individual page, which displays the list of synonyms, related taxa, occurrences, descriptions, media, and more. The list of homotypic and heterotypic synonyms is ordered historically and grouped by types.

It has been implemented as a module for the content management system Drupal. Thus the EDIT Data Portal offers a great deal of flexibility making it possible to adapt the EDIT Data Portal to the individual needs of a community.



EDIT Specimen Explorer

The EDIT Specimen Explorer helps find taxonomically relevant specimen and observation data by searching the GBIF (Global Biodiversity Information Facility) index using checklist-based thesauri, resulting in more complete results.



EDIT Maptools

The **EDIT MapViewer** supports taxonomists creating maps online. The maps can be downloaded as publication-ready images.

The **EDIT MapService** offers an easy means to integrate clear colourful distribution and occurrence maps into websites or applications.



EDIT provides a toolbox for modern taxonomy.

Find more information at <http://wp5.e-taxonomy.eu/> or contact editssupport@bgbm.org